

Stock Code: 300165

Skyray Instrument

The ISO 9001:2008 international quality certification system is adopted by our company

Accurate

Rapid

Non-destructive

TO BE A WORLD-LEADING ANALYTICAL TESTING SOLUTIONS PROVIDER

• Spectroscopy • Chromatography • Mass Spectrometry



EDX 3600H

Alloy Analyzer



Malaysia - Thailand

ABSOTEC CO., LTD.

70/26 Moo 5, Lumlugga Klong 6, Bungkumploy,
Lumlugga, Pathumthani 12150 Thailand

Tel: +66 (0) 2532 6103

Tel: +66 (0) 2178 2553

Fax: +66 (0) 2532 6102

E-mail: enquiry@absotecthailand.com

URL: <http://www.absotecthailand.com>

URL: <http://www.greeninnotec.com>

Test data in this manual, if not noted, is our company's test data.
All information in this manual is for reference only, which is subject to any change without notice.

Skyray Instrument Copyright 2011
Press date: 2011.08.02

Up to now, there are 99 countries and regions choosing Skyray Instrument



EDX 3600H

Alloy Analyzer



The World's Most Advanced Alloy Analyzer

Skyray Instrument is a professional manufacturer of high-performance X-ray fluorescence spectrometer. The high-performance desktop XRF alloy analyzer-EDX 3600H, brought up in 2011, which is equipped with the global advanced alloy analysis technology, the intelligent vacuum system and the low-energy light tube for vacuum test, it can efficiently reduce the testing interference, improve the resolution of light elements, and greatly improve the test effect of light elements, such as Al, Si, P and so on.



Specialized in Alloy Testing

- EDX3600H alloy analyzer is developed by Skyray for alloy testing
- It features high precision, fast testing speed and easy operation etc
- It has functions of qualitative and quantitative testing
- Testing samples include all alloy or metal components, from Na to U

Standard Configuration:

- High efficient super-thin window x-ray light tube
- High-performance electronic cooling UHRD detector
- Signal-to-Noise enhancer
- CMOS HD camera
- Collimator and filter
- Triple safety protection mode
- 90mm×70mm LCD
- Vacuum pump

Performance Advantages

- High efficient super-thin window x-ray light tube, which is specially developed for alloy testing, reaches the international advanced level
- Silicon drift detector (SDD), provides better energy linearity, resolution, spectrum characteristics and higher peak/base ratio
- Skyray's patent—Signal-to-Noise enhancer (SNE), improves the signal processing ability by 25 times or more
- Built-in CMOS HD camera
- Automatic switch of collimator and filter according to different samples, it eliminates the troublesome manual operation
- Heavy x-ray protection design
 - (1)Mechanical protection: segregate x-ray from mechanical design
 - (2)Electronical protection: Automatic shut-down of x-ray when opening the cover during testing
 - (3)Software protection: Automatic shut-down of software program when opening the cover during testing
- LCD screen directly shows the important parameters: pipe pressure, pipe flow and vacuum degree
- 2L vacuum pump

Mainly applies in alloy products, such as cuprumalloy, ferroalloy, nickel alloy etc



Product Parameters

Power: 200W

Ambient temperature: 15℃-30℃

Sample chamber size: 320mm×100mm

Weight: 65Kg

Voltage input: AC 220V (Optional: 110V)

Ambient humidity: 35%-70%

Instrument dimension: 660mm×510mm×350mm

Technical Specifications

Measurable range: Na to U

Analytical range: ppm—99.99% (different materials, with different analytical range)

Ability of simultaneous analysis: Once for tens of elements.

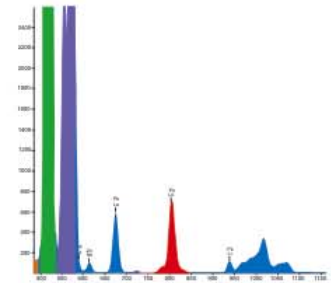
Precision: 0.05% (content 96% ↑)

Testing time: 60s-200s

Resolution: (140±5)eV

Tube voltage: 5KV-50KV

Tube current: 50uA-1000uA

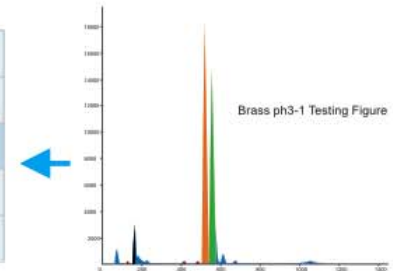


The test results of the hazardous element Pb

Test Case

| Element | Cu | Pb | Fe | Sn | Al | Ni | Mn | Si |
|---------|---------|--------|--------|--------|---------|--------|--------|--------|
| Content | 58.6531 | 3.0070 | 0.3866 | 0.0002 | 0.2287 | 0.2297 | 0.0002 | 0.0019 |
| Element | Sb | Co | P | S | Zn | Bi | Cr | |
| Content | 0.0002 | 0.0008 | 0.0098 | 0.0005 | 37.0130 | 0.3411 | 0.0052 | |

Components



Brass ph3-1 Testing Figure