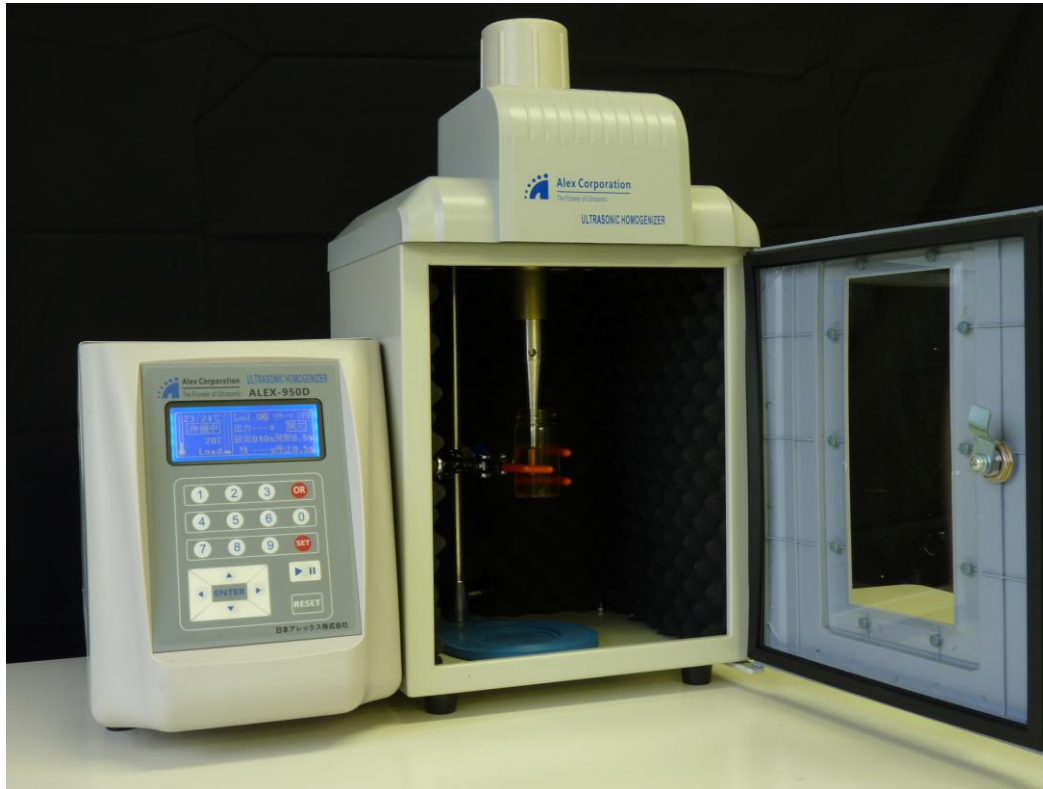


**NEW**

# Bio • Desktop model for Lab **ULTRASONIC HOMOGENIZER**



**BACTERIA CELL CRUSHING – DNA/RNA SHEARING SYSTEM  
BY APPLYING THE CAVITATION EFFECT FROM ULTRASONICS**

## **PRINCIPLE**

Applying high frequency and high voltage to ultrasonic piezo elements produces vibration amplitude. Amplifying this amplitude, using a booster, exposes a powerful ultrasonic energy from the titanium alloy terminals into the liquid solution. Samples receive shocks and collisions calculated in cycles of 20,000 times per second, resulted from the cavitation produced in the liquid.

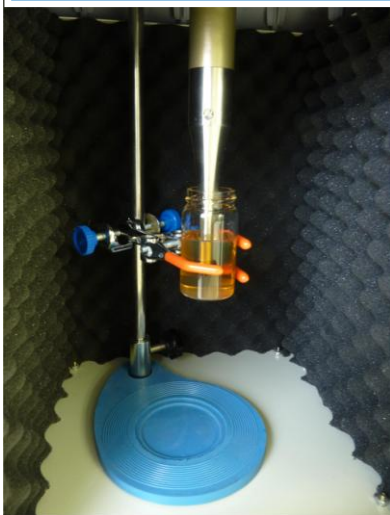
## **MAIN APPLICATIONS**

- **BACTERIA CELL CRUSHING**
- **DNA/RNA SHEARING**
- **SLURRY DISPERSION**
- **EMULSION DISPERSION**
- **ELEMENT SAMPLING FOR ANALYSIS**
- **CHEMICAL REACTION ACCELERATION**

## Generator Front Panel



## Sampling setup



## Titanium Alloy Tip



### Full Automated Tuning Control

A fully automated tuning function enabling a constant optimum oscillation.

### Equipped with a Standard Sound Proof Box

Audio noise cut for a better experiment environment

### Large Blue Screen Crystal Liquid Display

A large LCD panel with large characters facilitating operation and visualization.

### Built-in high function timer

A high function timer in which oscillation and pause time are inputted separately, displaying the setup and the residual time

### Temperature limiter and timer display

Equipped with a timer linked temperature limiter function. It displays the actual and the setup temperature. The timer can be set up or downwards.

### A Variety of Accessories

Foot switch; titanium alloy tip  $\varnothing$  2, 3, 6 (standard), 8, 10 and 15 and superfine thermocouple sensor.

## Specification Table

Output Frequency	20kHz $\pm$ 0.5kHz
Generator Max. Output Power	400W
Outer Dimensions (mm)	Generator: 400x220x280(H) Sound Proof Box: 300x300x550(H)
Standard Tip	$\varnothing$ 6mm
Throughput	500 $\mu$ l~500ml
Input Power Cable	2 meters
Output Power cable	2 meters
Input Power	AC 100V 50/60Hz

※ The contents and specifications on this catalog may be altered without notice due to improvement.

We design and manufacture special models to fulfill your needs. Be welcomed to contact us at any time.

Absotec Co., Ltd.  
70/26 Moo 5, Lumlugga Klong 6,  
Bungkumloy, Lumlugga, Pathumthai  
12150 Thailand  
Tel: +6625326103 Fax: +6625326103  
<http://www.absotecthailand.com>

**Alex Corporation** (<http://www.nalex.co.jp>)

Head Office / Plant:

348-149, Toyofuta, Kashiwa City,

Chiba Pref., 277-0827 Japan

Tel: +81-4-7137-2081

Fax: +81-4-7137-2083